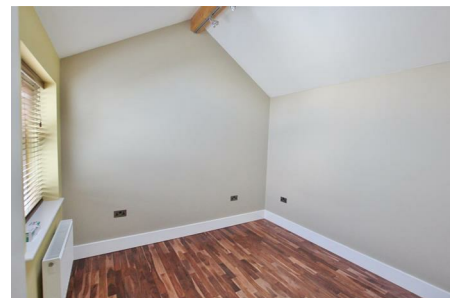
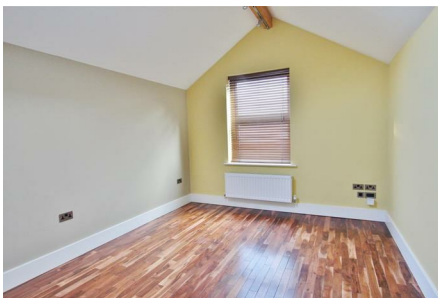


Christchurch Road, Boscombe, Bournemouth, Dorset BH1 4AG



£900 Per Calendar Month



HIGH QUALITY MODERN ONE BEDROOM FLAT - INTEGRATED KITCHEN APPLIANCES - CLOSE TO LOCAL SHOPS AND TRANSPORT LINK - AVAILABLE NOW

This one bedroom second floor flat has been finished to a very high standard throughout. The modern kitchen comes with an integrated washing machine, refrigerator and electric oven and hob. The kitchen is open plan with the lounge and has stylishly tiled and wooden floor as well as a vaulted ceiling with skylight windows. The bedroom is bright and well positioned in a quiet spot at the rear of the building. The bathroom has been tiled throughout and has a bath with shower and screen as well as a modern style toilet and basin. The property has a new water-fed heating system too. We feel this would be an ideal rental for anyone working close to Boscombe or needing to have good access to Bournemouth Town by bus.

Available Now

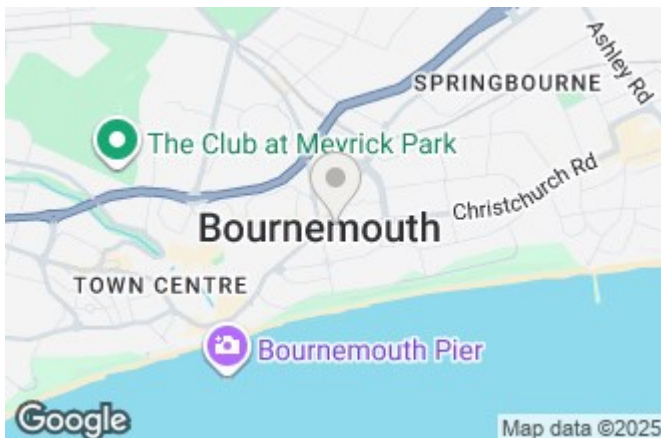
Deposit £923

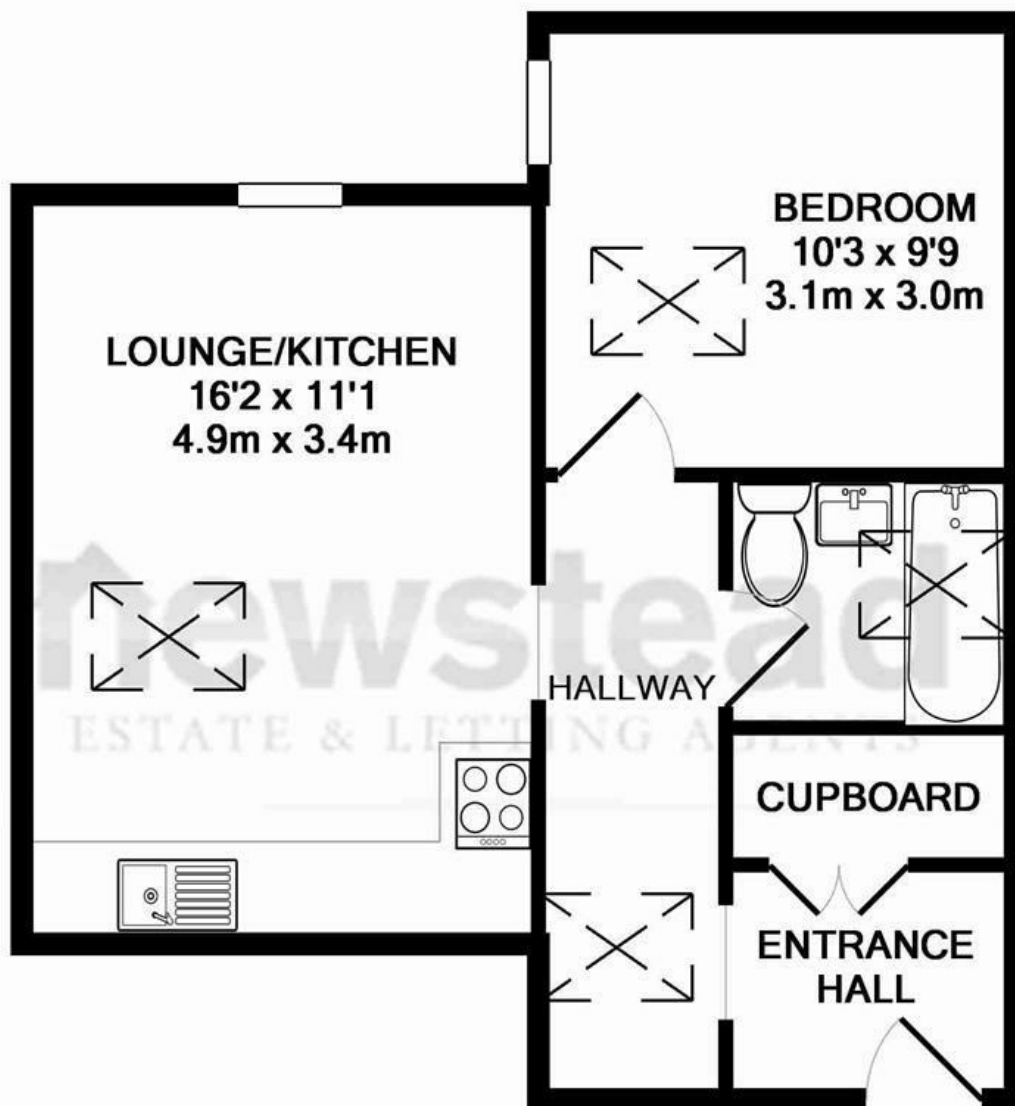
Unfurnished

No Pets

No DSS

Bournemouth Borough Council Tax Band A





TOTAL APPROX. FLOOR AREA 418 SQ.FT. (38.8 SQ.M.)

Whilst every attempt has been made to ensure the accuracy of the floor plan contained here, measurements of doors, windows, rooms and any other items are approximate and no responsibility is taken for any error, omission, or mis-statement. This plan is for illustrative purposes only and should be used as such by any prospective purchaser. The services, systems and appliances shown have not been tested and no guarantee as to their operability or efficiency can be given

Made with Metropix ©2015

Energy Efficiency Rating		Current	Potential
Very energy efficient - lower running costs			
(92 plus) A			
(81-91) B			
(69-80) C			
(55-68) D			
(39-54) E			
(21-38) F			
(1-20) G			
Not energy efficient - higher running costs			
England & Wales		46	47
EU Directive 2002/91/EC			

Environmental Impact (CO ₂) Rating		Current	Potential
Very environmentally friendly - lower CO ₂ emissions			
(92 plus) A			
(81-91) B			
(69-80) C			
(55-68) D			
(39-54) E			
(21-38) F			
(1-20) G			
Not environmentally friendly - higher CO ₂ emissions			
England & Wales		63	63
EU Directive 2002/91/EC			